



GROSVENOR GARDENS, VICTORIA, SW1

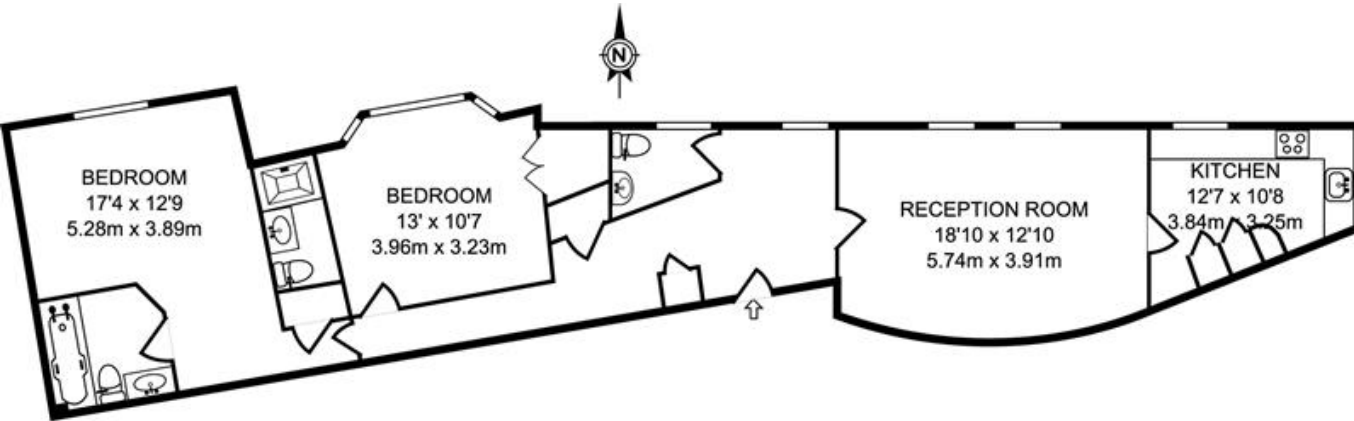
£1,400,000

A well presented 2 double bedroom flat extending to 1087 sq ft on the second floor (with lift) of this elegant period building located close to both Belgravia and Victoria. The apartment benefits from well laid out accommodation having 2 double bedrooms, en-suite bathroom and a second en-suite shower room and separate guest cloakroom, good size reception room and kitchen. The flat features high ceilings and has wonderful open views towards Buckingham Palace Gardens. The property is located on the corner of Lower Grosvenor Place and Grosvenor Gardens.

Details

- 2 Bedrooms
- 2 En-Suite Bath/Shower Room
- Guest Cloakroom
- Reception Room
- Kitchen
- Lift





GROSS INTERNAL FLOOR AREA
1,087 SQ FT/101.04 SQ M

Terms and Conditions

Tenure:	74 years
Service Charge:	£8,000.00
Borough:	Westminster
Council Tax Band:	H
Council Tax:	£1,560.56
Price:	£1,400,000

EPC Information

Energy performance certificate (EPC)

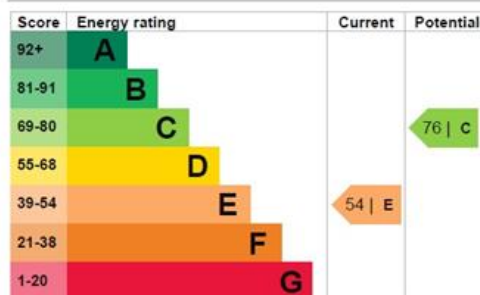


Property type

Mid-floor flat

Total floor area

97 square metres



The graph shows this property's current and potential energy efficiency.

Properties are given a rating from A (most efficient) to G (least efficient).

Properties are also given a score. The higher the number the lower your fuel bills are likely to be.

The average energy rating and score for a property in England and Wales are D (60).

SUBJECT TO CONTRACT

VIEWING STRICTLY BY APPOINTMENT