



HOLLAND ROAD, KENSINGTON, W14

£795,000

On the raised ground floor of a classic period building extending to 831 sq ft, with great ceiling heights throughout and fantastic views over a mature well maintained communal garden which are an extremely well kept secret for residents only. Separate kitchen, the bedroom is a great size, bathroom and raised mezzanine sleeping area ideal for home office or second sleeping area. The apartment is located a short walk to Holland Park and Westfield Shopping centre. Ideal for Central Line and road links to Heathrow

Details

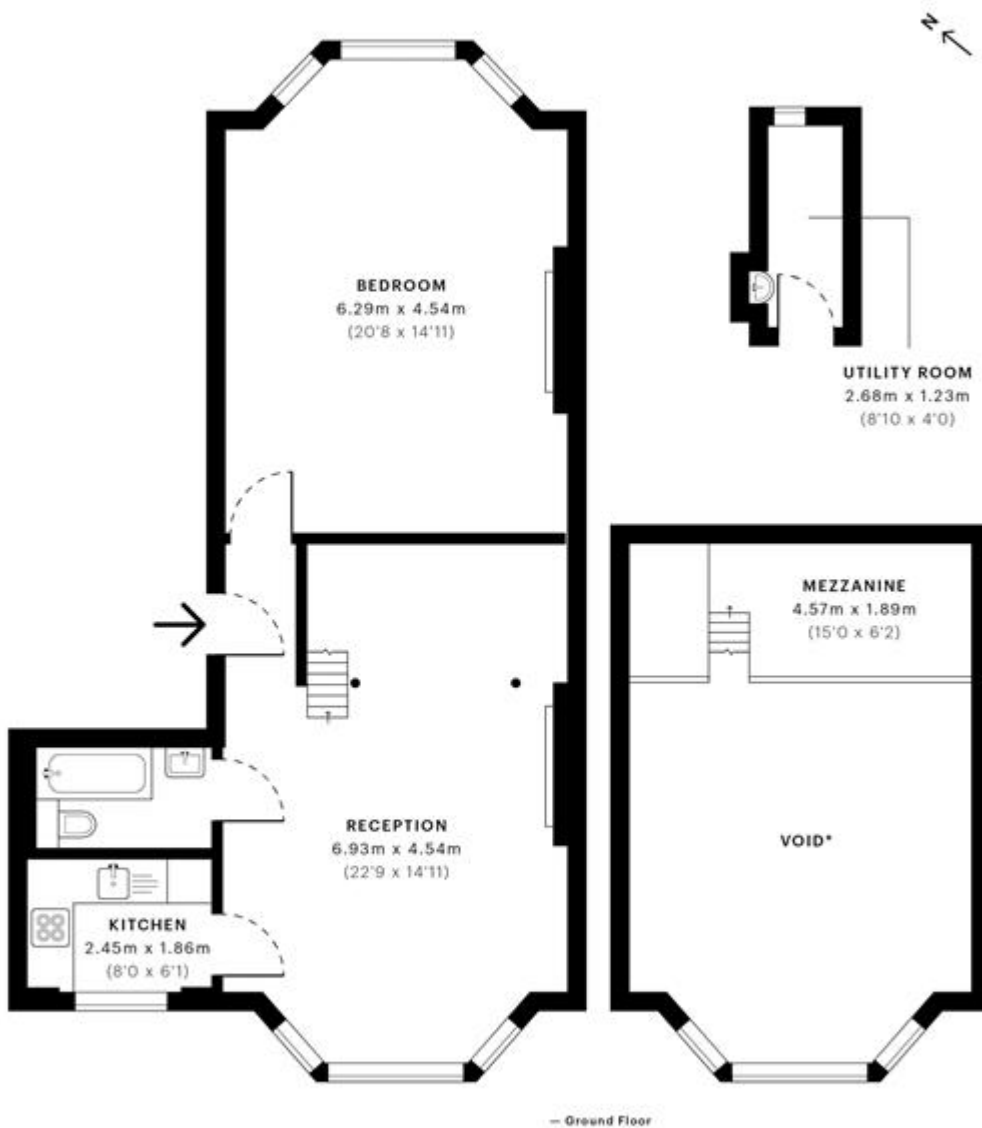
- Bedroom
- Bathroom
- Reception Room
- Kitchen
- Mezzanine
- Communal Garden





Holland Road, W14

GROSS INTERNAL AREA
77.20 sqm / 830.97 sqft



Spec Verified floor plans are produced in accordance with Royal Institution of Chartered Surveyors' Property Measurement Standards. Plots and gardens are illustrative only and excluded from all area calculations. Due to rounding, numbers may not add up precisely. All measurements shown for the individual room lengths and widths are the maximum points of measurements captured in the scan.

Terms and Conditions

Tenure: 163 years
 Service Charge: £2,200.00
 Borough: Kensington & Chelsea
 Council Tax Band: D
 Council Tax: £1,236.83
 Price: £795,000

EPC Information



Property type
 Mid-floor flat

Total floor area
 66 square metres

Score	Energy rating	Current	Potential
92+	A		
81-91	B		81 B
69-80	C	71 C	
55-68	D		
39-54	E		
21-38	F		
1-20	G		

The graph shows this property's current and potential energy efficiency.

Properties are given a rating from A (most efficient) to G (least efficient).

Properties are also given a score. The higher the number the lower your fuel bills are likely to be.

The average energy rating and score for a property in England and Wales are D (60).

SUBJECT TO CONTRACT

VIEWING STRICTLY BY APPOINTMENT