



EVELYN COURT, MARYLEBONE, W1

£450,000

A great opportunity to purchase this sixth floor one bedroom purpose built apartment located just a short walk away from Marble Arch tube station

The accommodation comprises of reception room, kitchen, bedroom and bathroom.

Evelyn Court is brilliantly located just a short walk away from Marylebone High Street, Edgware Road, Paddington, Oxford Street and the open spaces of Hyde Park.

The property would make a perfect rental investment or pierre de terre.

Details

- Reception Room
- Kitchen
- Bedroom
- Bathroom
- Lift

PLAZA estates

www.plazaestates.co.uk

Marble Arch Office, 29 Edgware Road, London W2 2JE Tel: 020-7724-3100 Fax: 020-7258-3090

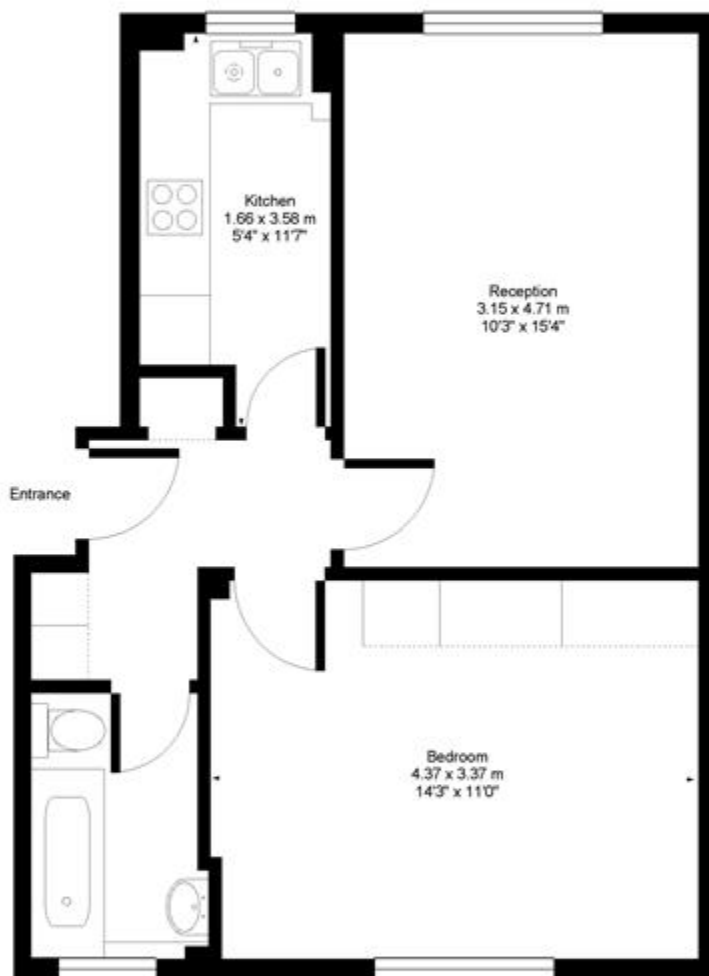




Evelyn Court Edgware Road, W2



Approx. Gross Floor Area = 44 sq.meters • 480 sq.feet



SIXTH FLOOR

For illustrative purposes only. Not to scale. Prepared by Swan Photography 07974 264576

Terms and Conditions

Tenure:	112 years
Service Charge:	£3,500.00
Borough:	Westminster
Price:	£450,000

SUBJECT TO CONTRACT

VIEWING STRICTLY BY APPOINTMENT