



## CASTLEACRE, HYDE PARK, W2

**£1,200 per week**

An extremely spacious three bedroom apartment located on the seventh floor of this prestigious purpose built block on the Hyde Park Estate. The accommodation comprises of large south westerly facing reception room/dining room, fully fitted kitchen, three double bedrooms, two shower rooms (both en-suite) and guest cloakroom. Added benefits include 24 hour concierge and lifts.

Castleacre is an extremely sought after purpose built block wonderfully located just a short walk from Marble Arch tube station, Paddington, Oxford Street and the open spaces of Hyde Park. (PLEASE NOTE TENANCY TERM UNTIL MID DECEMBER)

### Details

- Reception room/ Dining Room
- Kitchen
- Three Double Bedrooms
- Two Shower Rooms
- Guest Cloakroom
- 24 Hour Concierge
- Lifts

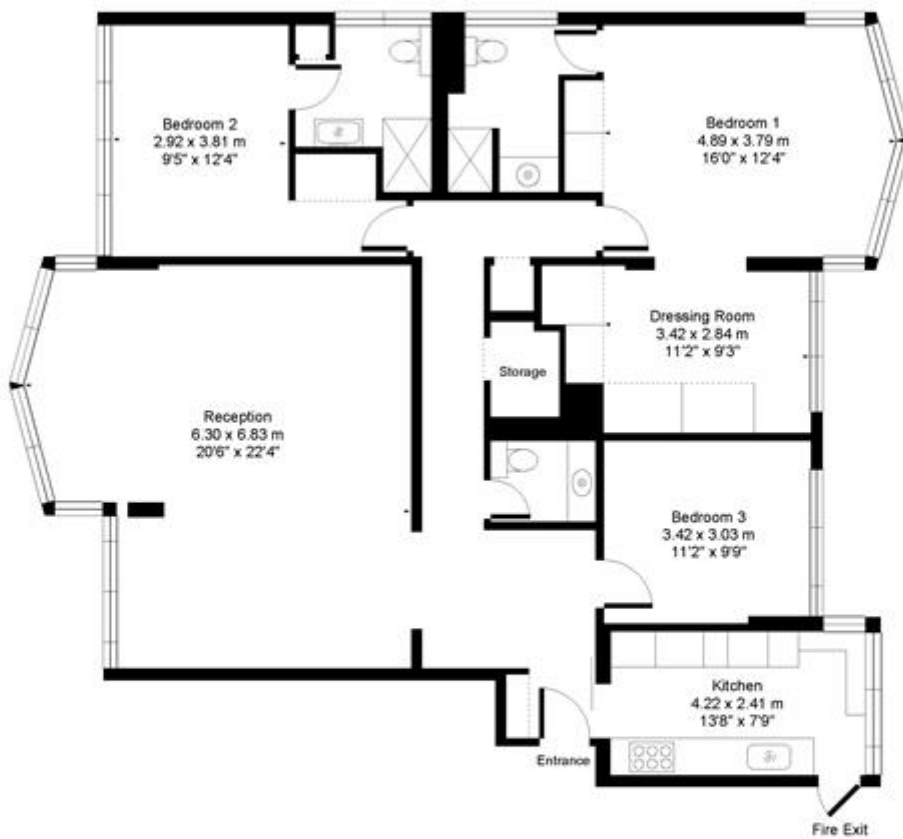




## Castleacre Hyde Park Crescent, W2



Approx. Gross Floor Area = 143 sq.meters • 1549 sq.feet



### SEVENTH FLOOR

For illustrative purposes only. Not to scale. Prepared by Swan Photography 07974 264576

## Terms and Conditions

Available: Now for Long Let  
Price: £1,200 per week

## EPC Information

### Energy performance certificate (EPC)



Property type  
Mid-floor flat

Total floor area  
142 square metres

| Score | Energy rating | Current | Potential |
|-------|---------------|---------|-----------|
| 92+   | A             |         |           |
| 81-91 | B             |         |           |
| 69-80 | C             |         | 77   C    |
| 55-68 | D             |         |           |
| 39-54 | E             | 50   E  |           |
| 21-38 | F             |         |           |
| 1-20  | G             |         |           |

The graph shows this property's current and potential energy efficiency.

Properties are given a rating from A (most efficient) to G (least efficient).

Properties are also given a score. The higher the number the lower your fuel bills are likely to be.

The average energy rating and score for a property in England and Wales are D (60).

## Fees

Fees may apply.

**SUBJECT TO CONTRACT**

**VIEWING STRICTLY BY APPOINTMENT**